

Ziggy | 34" wide | 34" horiz. x 36" vert. repeat | 8 yd. rolls

# ZIGGY

Graphic but structured, with the perfect in-between scale, Ziggy's rhythmic waves create movement, and capture and reflect the light.



*wt* winfield thybony  
wallcovering



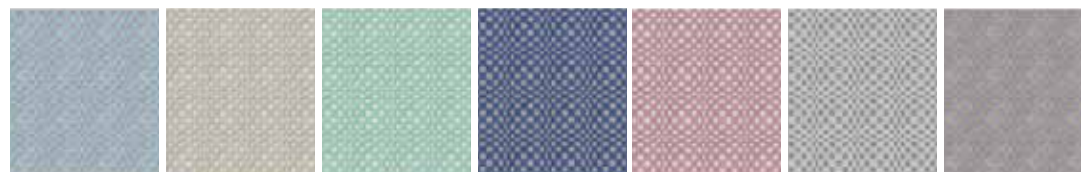
SHŌWHOUSE

# EYEPOP

Create excitement with this energetic, futuristic thriller. Executed in muted tones, Eyepop conveys refinement with an edge.



Eyepop | 34" wide | 2.83" horiz. x 3" vert. repeat | 8 yd. rolls



# STAR

Anchored by a classic design element used over centuries in tiles, mosaics, and woodcarvings, Star's hand woven sisal ground replicates the texture of wood grain delivering strength and subtlety.



Star | 34" wide | 17" horiz. x 18" vert. repeat | 8 yd. rolls



Chain | 34" wide | 4.25" horiz. x 4.5" vert. repeat | 8 yd. rolls

# CHAIN

True to the graphically bold characteristics of links, this interpretation creates accessibility by introducing an element of softness. Chain strikes a beautiful balance between texture, pattern and underlying shimmer.



# BATIK

Produced on hand woven sisal, Ikat-inspired Batik is a modern interpretation of classic design, transcending time and place to create a unique interior setting.



Batik | 34" wide | 17" horiz. x 18" vert. repeat | 8 yd. rolls



Now more than ever, Winfield Thybony is creating cutting edge, decorative wallcoverings that add comfort and luxury to your interiors. Our collections of 100% linen, silk, authentic wood veneer, and timeless bamboo, cork, grasscloth, mica and sisal are as mindful of the environment as they are of your design needs.

We are proud to introduce Showhouse, a new collection of highly styled patterns that are inspired by Mid-Century Modern design. The introductory set of nine patterns combines contemporary designs with new print technologies to deliver easy living patterns that pair perfectly with today's modern and transitional architectural design aesthetics.

These Class A, 34-inch printed grasscloths are produced using innovative layering techniques to deliver the dimension of grasscloth without typical panel seaming from strip to strip. Adaptable to any space, Showhouse and the rest of the Winfield Thybony portfolio flawlessly and impeccably reflect the very best of interior design.



**winfield thybony wallcovering**  
SHOWHOUSE for Winfield

400 High Grove Blvd  
Glendale Heights, Illinois 60139  
800-486-6800    winthy.com

Marketed Nationally by Kravet Inc.  
For more information email: [info@winthy.com](mailto:info@winthy.com)



Brush Stroke | 34" wide | 17" horiz. x 18" vert. repeat | 8 yd. rolls

## BRUSH STROKE

Inspired by Mid-Century abstract art's multi-layered effect, Brush Stroke provides a fitting backdrop for traditional and contemporary spaces alike.



## LAVALAMP

Lavalamp's reflective grasscloth ground, groovy lines and diverse color range evoke the psychedelic glow of the 60's, creating movement and mystery.



Lavalamp | 34" wide | 17" horiz. x 18" vert. repeat | 8 yd. rolls



Pop | 34" wide | 17" horiz. x 18" vert. repeat | 8 yd. rolls

## ALDER

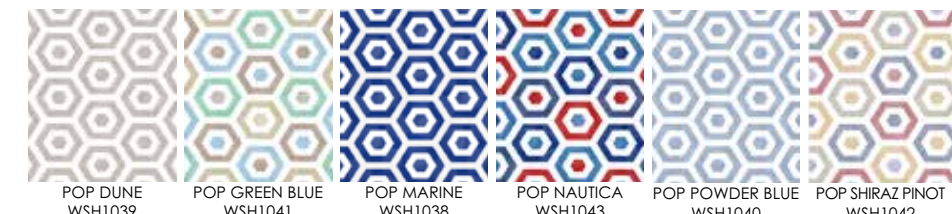
Taking a modern approach to Mid-Century style, Alder marries fluidity with geometry to deliver both symmetry and perspective.



Alder | 34" wide | 2.83" horiz. x 3" vert. repeat | 8 yd. rolls

## POP

This hexagonal print uses rotational symmetries to create a design within a design. Pop's layering of inks and unique color palette juxtaposes an organic soothing quality with the energy of geometrics.



**winfield thybony**  
wallcovering